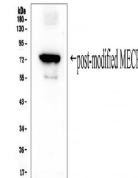


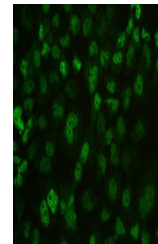
## Product Datasheet

### MECP2 Antibody (orb546271)

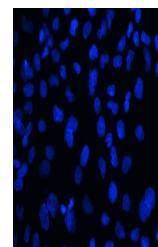
|                            |  |
|----------------------------|--|
| <b>Description</b>         | MECP2 Antibody   |
| <b>Species/Host</b>        | Rabbit   |
| <b>Reactivity</b>          | Human, Mouse, Rat  |
| <b>Conjugation</b>         | Unconjugated   |
| <b>Tested Applications</b> | ELISA, ICC, IF, IHC, WB  |
| <b>Immunogen</b>           | E.coli-derived human MECP2 recombinant protein (Position: K119-R453).  |
| <b>Form/Appearance</b>     | Lyophilized  |
| <b>Concentration</b>       | Adding 0.2 ml of distilled water will yield a concentration of 500 µg/ml.  |
| <b>Storage</b>             | Store at -20°C for one year from date of receipt. After reconstitution, at 4°C for one month. It can also be aliquotted and stored frozen at -20°C for six months. Avoid repeated freeze-thaw cycles.  |
| <b>Note</b>                | For research use only  |
| <b>Application notes</b>   | Tested Species: In-house tested species with positive results. By Heat: Boiling the paraffin sections in 10mM citrate buffer, pH6.0, for 20mins is required for the staining of formalin/paraffin sections. Other applications have not been tested. Optimal dilutions should be determined by end users. Add 0.2ml of distilled water will yield a concentration of 500ug/ml. |
| <b>Isotype</b>             | Rabbit IgG   |
| <b>Clonality</b>           | Polyclonal   |
| <b>MW</b>                  | 75 kDa   |
| <b>Uniprot ID</b>          | <b>P51608</b>  |
| <b>Expiration Date</b>     | 12 months from date of receipt.  |



WB analysis of MECP2 using anti-MECP2 an...



IF analysis of MECP2 using anti-MECP2 an...



IF analysis of MECP2 using anti-MECP2 an...