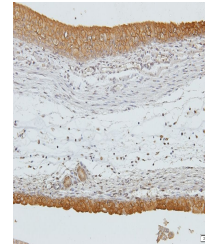


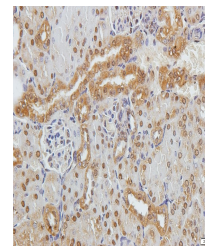
## Product Datasheet

### B4GALNT4 antibody (orb546266)

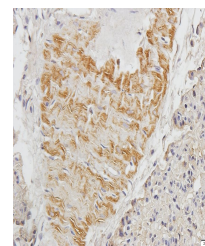
<b>Description</b>	B4GALNT4 antibody
<b>Species/Host</b>	Rabbit
<b>Reactivity</b>	Guinea pig, Human, Mouse, Rat
<b>Conjugation</b>	Unconjugated
<b>Tested Applications</b>	IHC-P
<b>Immunogen</b>	KLH conjugated synthetic peptide derived from human B4GALNT4. Please contact us for the exact immunogen sequence.
<b>Target</b>	B4GALNT4
<b>Form/Appearance</b>	10 mM PBS, 0.02% sodium azide, 10 mg/ml rAlbumin
<b>Storage</b>	After reconstitution store at 4°C.for up to two weeks. For long term storage, aliquot and store at -20°C. Avoid freeze/thaw cycles.
<b>Note</b>	For research use only
<b>Isotype</b>	IgG
<b>Clonality</b>	Polyclonal
<b>Purity</b>	Polyclonal antibodies are purified by peptide affinity chromatography
<b>MW</b>	35kDa/55kDa
<b>Uniprot ID</b>	<b>Q76KP1</b>
<b>Dilution Range</b>	IHC-P: 1:100-1:800
<b>Expiration Date</b>	12 months from date of receipt.



IHC-P image of guinea pig kidney tissue ...



IHC-P staining of guinea pig kidney tiss...



Immunohistochemical staining of paraffin...