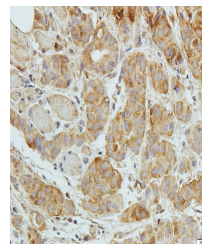


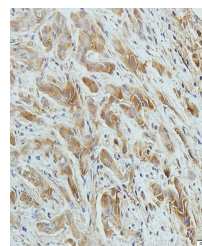
Product Datasheet

Zyxin antibody (orb546264)

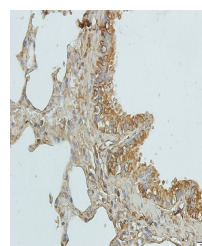
Description	Zyxin antibody
Species/Host	Rabbit
Reactivity	Human, Mouse, Rat
Conjugation	Unconjugated
Tested Applications	IHC-P, WB
Immunogen	KLH conjugated synthetic peptide derived from human Zyxin. Please contact us for the exact immunogen sequence.
Target	Zyxin
Form/Appearance	10 mM PBS, 0.02% sodium azide, 10 mg/ml rAlbumin
Storage	After reconstitution store at 4°C. for up to two weeks. For long term storage, aliquot and store at -20°C. Avoid freeze/thaw cycles.
Note	For research use only
Isotype	IgG
Clonality	Polyclonal
Purity	Polyclonal antibodies are purified by peptide affinity chromatography
MW	61kDa
Uniprot ID	Q15942
Dilution Range	IHC-P: 1:100-1:800, WB: 1:100-1:1000
Expiration Date	12 months from date of receipt.



IHC-P staining of human breast cancer ti...



Immunohistochemical staining of human br...



IHC-P staining of rat lung tissue using ...