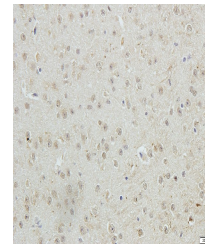


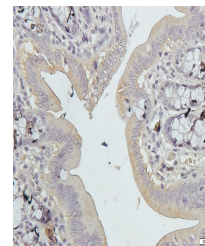
Product Datasheet

Glypican-1 antibody (orb546262)

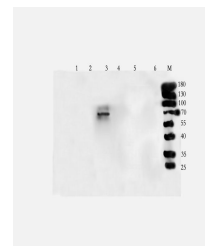
Description	Glypican-1 antibody
Species/Host	Rabbit
Reactivity	Human, Mouse, Rat
Conjugation	Unconjugated
Tested Applications	IHC-P, WB
Immunogen	KLH conjugated synthetic peptide derived from human Glypican-1. Please contact us for the exact immunogen sequence.
Target	Glypican-1
Form/Appearance	10 mM PBS, 0.02% sodium azide, 10 mg/ml rAlbumin
Storage	After reconstitution store at 4°C.for up to two weeks. For long term storage, aliquot and store at -20°C. Avoid freeze/thaw cycles.
Note	For research use only
Isotype	IgG
Clonality	Polyclonal
Purity	Polyclonal antibodies are purified by peptide affinity chromatography
MW	62kDa
Uniprot ID	P35052
Dilution Range	IHC-P: 1:50-1:500, WB: 1:100-1:800
Expiration Date	12 months from date of receipt.



IHC-P staining of mouse brain tissue using...



Immunohistochemical staining of paraffin...



Western blot analysis of mouse colon (L...