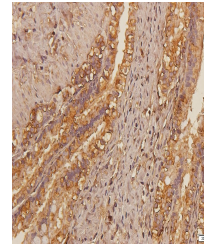


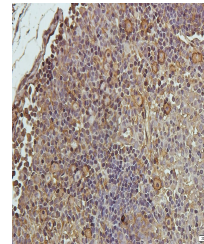
Product Datasheet

DOCK8 antibody (orb546261)

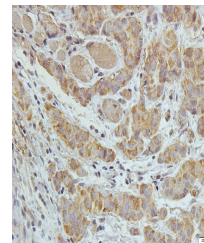
Description	DOCK8 antibody
Species/Host	Rabbit
Reactivity	Guinea pig, Human, Mouse, Rat
Conjugation	Unconjugated
Tested Applications	IHC-P, WB
Immunogen	KLH conjugated synthetic peptide derived from human DOCK8. Please contact us for the exact immunogen sequence.
Target	DOCK8
Form/Appearance	10 mM PBS, 0.02% sodium azide, 10 mg/ml rAlbumin
Storage	After reconstitution store at 4°C.for up to two weeks. For long term storage, aliquot and store at -20°C. Avoid freeze/thaw cycles.
Note	For research use only
Isotype	IgG
Clonality	Polyclonal
Purity	Polyclonal antibodies are purified by peptide affinity chromatography
MW	130kDa/55kDa
Uniprot ID	Q8NF50
Dilution Range	IHC-P: 1:100-1:800
Expiration Date	12 months from date of receipt.



Immunohistochemical staining of rat brai...



Immunohistochemical staining of paraffin...



Immunohistochemical staining of paraffin...