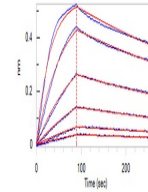


Product Datasheet

Human CTGF / CCN2 Protein (orb545757)

Description	Human CTGF, His Tag is expressed from human 293 cells (HEK293). It contains AA Gln 27 - Ala 349 (Acc...
Reactivity	Human
Endotoxins	1.0 EU per µg
Conjugation	Unconjugated
Target	CTGF
Preservatives	Tris with Potassium glutamate and Arginine, pH7.0
Form/Appearance	Powder
Storage	-20°C to -70°C for 12 months in lyophilized state; -70°C for 3 months under sterile conditions after reconstitution. For long term storage, the product should be stored at lyophilized state at -20°C or lower.
Tag	C-10×His
Note	For research use only
Application notes	This protein carries a polyhistidine tag at the C-terminus. The protein has a calculated MW of 37.4 kDa. The protein migrates as 36-45 kDa under reducing (R) condition (SDS-PAGE) due to glycosylation.
Purity	90%
Source	Human CTGF, His Tag (orb545757) is expressed from human 293 cells (HEK293). It contains AA Gln 27 - Ala 349 (Accession # Q5M8T4-1).
MW	37.4 kDa
Uniprot ID	Q5M8T4
NCBI	NP_001892.1
Expiration Date	6 months from date of receipt.



Loaded
Monoclonal
Anti-Human
CTGF
Antibo...