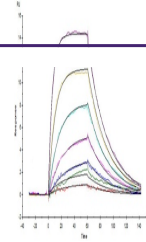

Product Datasheet

Human GM-CSF R alpha Protein (orb545734)

Description

Human GM-CSF R alpha, His Tag is expressed from



Human GM-CSF R alpha, His Tag (Cat. No. ...

Reactivity	Human
Endotoxins	1.0 EU per µg
Conjugation	Unconjugated
Target	GM-CSF R alpha
Preservatives	PBS, pH7.4
Form/Appearance	Powder
Storage	-20°C to -70°C for 12 months in lyophilized state; -70°C for 3 months under sterile conditions after reconstitution. For long term storage, the product should be stored at lyophilized state at -20°C or lower.
Tag	C-10×His
Note	For research use only
Application notes	This protein carries a polyhistidine tag at the C-terminus. The protein has a calculated MW of 36.4 kDa. The protein migrates as 60-65 kDa under reducing (R) condition (SDS-PAGE) due to glycosylation.
Purity	95%
Source	Human GM-CSF R alpha, His Tag (orb545734) is expressed from human 293 cells (HEK293). It contains AA Glu 23 - Gly 320 (Accession # P15509-1).
MW	36.4 kDa
Uniprot ID	P15509
NCBI	NP_006131.2
Expiration Date	6 months from date of receipt.