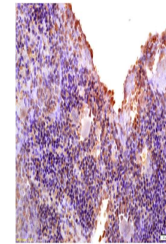


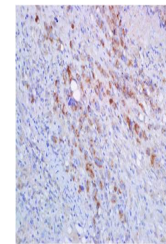
Product Datasheet

HLA-A antibody (orb5449)

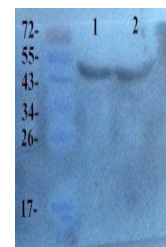
Description	HLA-A antibody
Species/Host	Rabbit
Reactivity	Human
Conjugation	Unconjugated
Tested Applications	ELISA, ICC, IF, IHC-P, WB
Immunogen	KLH conjugated synthetic peptide derived from human HLA-A. Please contact us for the exact immunogen sequence. The peptide is available as orb393921.
Target	HLA-A
Form/Appearance	10 mM PBS, 0.02% sodium azide
Concentration	- 100 µg (in 200 µl): 0.5 mg/ml- 200 µg (in 400 µl): 0.5 mg/ml
Storage	Store at 4°C for up to two weeks. For long term storage, aliquot and store at -20°C, avoid freeze/thaw cycles.
Note	For research use only
Application notes	This antibody against Human, Mouse, Rat
Isotype	IgG
Clonality	Polyclonal
Purity	Polyclonal antibodies are purified by peptide affinity chromatography
MW	40 kDa
Uniprot ID	P01891
Entrez	3107
Dilution Range	WB: 2 µg/ml, IF/ICC: 1:100, IHC-P: 1:100
Expiration Date	12 months from date of receipt.



IHC-P of mouse spleen tissue (MHC class ...



IHC-P analysis of mouse lymphoma tissue ...



WB analysis of human breast cancer (Lane...