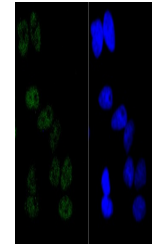


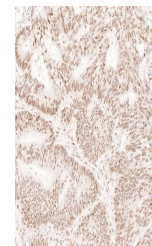
Product Datasheet

Cyclin E1 (4H7) antibody (orb544573)

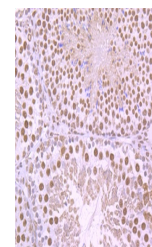
Description	Cyclin E1 (4H7) antibody
Species/Host	Rabbit
Reactivity	Human, Mouse
Conjugation	Unconjugated
Tested Applications	ICC, IHC-P, WB
Immunogen	Recombinant human Cyclin E1 protein(100-200aa)
Target	Cyclin E1
Preservatives	0.01M TBS(pH7.4) with 1% rAlbumin, 0.03% Proclin300 and 50% Glycerol.
Form/Appearance	Liquid
Concentration	1mg/ml
Storage	Maintain refrigerated at 2-8°C for up to 2 weeks. For long term storage store at -20°C in small aliquots to prevent freeze-thaw cycles.
Note	For research use only
Isotype	IgG
Clonality	Recombinant
MW	45 kDa
Uniprot ID	P24864
Dilution Range	WB=1:500, IHC-P=1:100-500, ICC=1:50
Expiration Date	12 months from date of receipt.



ICC analysis of HeLa cell using Cyclin E1...



IHC-P analysis of human colon carcinoma ...



IHC-P analysis of mouse testis using Cyc...