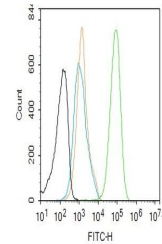


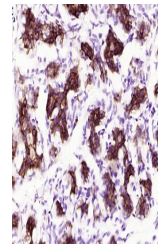
## Product Datasheet

### GSK-3 Beta (phospho-Ser9) antibody (orb544567)

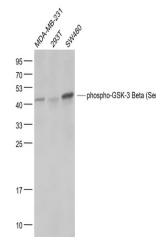
<b>Description</b>	GSK-3 Beta (phospho-Ser9) antibody
<b>Species/Host</b>	Rabbit
<b>Reactivity</b>	Human
<b>Conjugation</b>	Unconjugated
<b>Tested Applications</b>	IHC-P, WB
<b>Immunogen</b>	KLH conjugated Synthesised phosphopeptide derived from human GSK-3 Beta around the phosphorylation site of Ser9 (TT(p-S)FA)
<b>Target</b>	phospho-GSK-3 Beta (Ser9)
<b>Preservatives</b>	0.01M TBS(pH7.4) with 1% rAlbumin, 0.03% Proclin300 and 50% Glycerol.
<b>Form/Appearance</b>	Liquid
<b>Concentration</b>	1mg/ml
<b>Storage</b>	Shipped at 4°C. Store at -20°C for one year. Avoid repeated freeze/thaw cycles.
<b>Note</b>	For research use only
<b>Isotype</b>	IgG
<b>Clonality</b>	Recombinant
<b>MW</b>	47 kDa
<b>Uniprot ID</b>	<b>P49841</b>
<b>Dilution Range</b>	WB=1:500-2000, IHC-P=1:20-200
<b>Expiration Date</b>	12 months from date of receipt.



Flow cytometry of MCF7. Primary Antibody ...



IHC-P analysis of human breast using pho...



Western blot:MDA-MB-231(Human) Cell;293T...