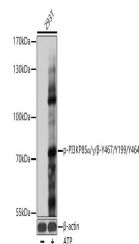


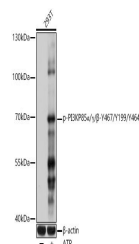
## Product Datasheet

# PI3KP85alpha/gamma/beta (Phospho-Y467/Y199/Y464) antibody (orb544410)

<b>Description</b>	Rabbit polyclonal antibody to PI3KP85alpha/gamma/beta (Phospho-Y467/Y199/Y464)
<b>Species/Host</b>	Rabbit
<b>Reactivity</b>	Mouse
<b>Conjugation</b>	Unconjugated
<b>Tested Applications</b>	WB
<b>Immunogen</b>	A synthetic phosphorylated peptide around Y467/Y199/Y464 of human p85-alpha (NP_852664.1).
<b>Preservatives</b>	Buffer: PBS with 0.02% sodium azide, 50% glycerol, pH 7.3.
<b>Storage</b>	Maintain refrigerated at 2-8°C for up to 2 weeks. For long term storage store at -20°C in small aliquots to prevent freeze-thaw cycles.
<b>Note</b>	For research use only
<b>Isotype</b>	IgG
<b>Clonality</b>	Polyclonal
<b>Purity</b>	Affinity purification
<b>MW</b>	85kDa
<b>Uniprot ID</b>	<a href="#">P27986</a>
<b>Entrez</b>	<a href="#">529552968503</a>
<b>Dilution Range</b>	WB: 1:500-1:2000
<b>Expiration Date</b>	12 months from date of receipt.



Western blot analysis of extracts of 293...



Western blot analysis of extracts of 293...