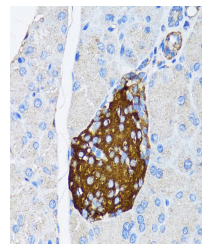


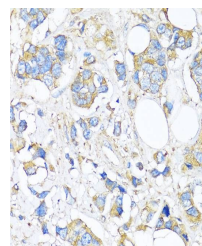
Product Datasheet

TIMP2 antibody (orb543218)

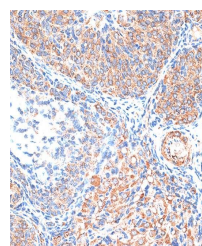
Description	Rabbit polyclonal antibody to TIMP2
Reactivity	Human, Mouse, Rat
Conjugation	Unconjugated
Tested Applications	IHC, WB
Immunogen	A synthetic peptide of human TIMP2(NP_003246.1).
Preservatives	PBS with 0.01% thiomersal,50% glycerol,pH7.3.
Storage	Maintain refrigerated at 2-8°C for up to 2 weeks. For long term storage store at -20°C in small aliquots to prevent freeze-thaw cycles.
Note	For research use only
Isotype	IgG
Clonality	Polyclonal
MW	22KDa
Uniprot ID	P16035
Dilution Range	WB: 1:500-1:2000, IHC-P: 1:50-1:200
Expiration Date	12 months from date of receipt.



Immunohistochemical staining of Mouse pa...



Immunohistochemical staining of Human br...



Immunohistochemical staining of Rat ovar...