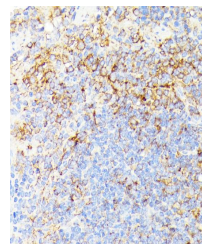


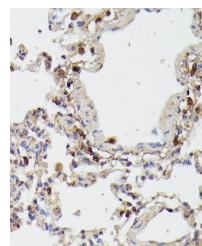
## Product Datasheet

### RIPK1 antibody (orb542509)

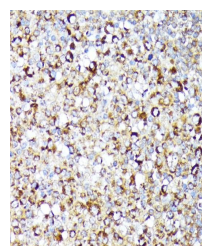
<b>Description</b>	Rabbit polyclonal antibody to RIPK1
<b>Reactivity</b>	Human, Mouse, Rat
<b>Conjugation</b>	Unconjugated
<b>Tested Applications</b>	ICC, IF, IHC, IP, WB
<b>Immunogen</b>	A synthetic peptide of human RIPK1/RIP(NP_003795.2).
<b>Preservatives</b>	PBS with 0.05% proclin300,50% glycerol,pH7.3.
<b>Storage</b>	Store at -20°C. Avoid freeze / thaw cycles.
<b>Note</b>	For research use only
<b>Isotype</b>	IgG
<b>Clonality</b>	Polyclonal
<b>MW</b>	75KDa/38KDa
<b>Uniprot ID</b>	<b>Q13546</b>
<b>Dilution Range</b>	WB: 1:500-1:2000, IP: 1:50-1:200
<b>Expiration Date</b>	12 months from date of receipt.



Immunohistochemical staining of mouse sp...



Immunohistochemical staining of rat lung...



Immunohistochemical staining of human to...