

## Product Datasheet

### STAT1 (Phospho-S727) antibody (orb542497)

**Description** Rabbit polyclonal antibody to STAT1 (Phospho-S727)

**Species/Host** Rabbit

**Reactivity** Human, Mouse, Rat

**Conjugation** Unconjugated

**Tested Applications** IHC, WB

**Immunogen** A synthetic phosphorylated peptide around S727 of human STAT1 (NP\_009330.1).

**Preservatives** Buffer: PBS with 0.02% sodium azide, 50% glycerol, pH 7.3.

**Storage** Maintain refrigerated at 2-8°C for up to 2 weeks. For long term storage store at -20°C in small aliquots to prevent freeze-thaw cycles.

**Note** For research use only

**Isotype** IgG

**Clonality** Polyclonal

**Purity** Affinity purification

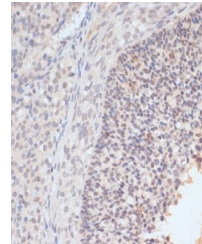
**MW** 87kDa

**Uniprot ID** [P42224](#)

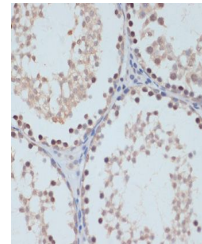
**Entrez** [6772](#)

**Dilution Range** WB: 1:500-1:2000, IHC-P: 1:50-1:100, IP: 1:50-1:100

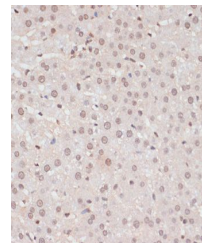
**Expiration Date** 12 months from date of receipt.



Immunohistochemical staining of rat ovar...



Immunohistochemical staining of rat test...



Immunohistochemical staining of rat live...