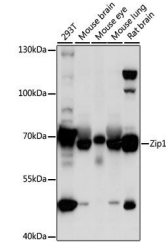


Product Datasheet

Zip12 antibody (orb542413)

Description	Rabbit polyclonal antibody to Zip12
Reactivity	Human, Mouse, Rat
Conjugation	Unconjugated
Tested Applications	IHC, WB
Immunogen	A synthetic peptide of human SLC39A12(NP_001138667.1).
Preservatives	PBS with 0.01% thiomersal, 50% glycerol, pH7.3.
Storage	Maintain refrigerated at 2-8°C for up to 2 weeks. For long term storage store at -20°C in small aliquots to prevent freeze-thaw cycles.
Note	For research use only
Isotype	IgG
Clonality	Polyclonal
MW	77kDa
Uniprot ID	Q504Y0
Dilution Range	WB: 1:500-1:2000, IHC-P: 1:50-1:200
Expiration Date	12 months from date of receipt.



Western blot analysis of extracts of var...