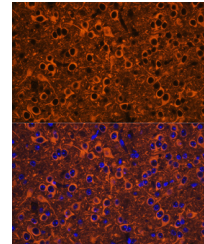


Product Datasheet

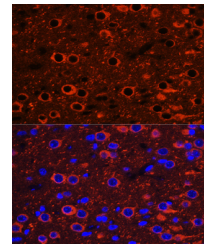
Tubulin beta 3 antibody (orb542183)

Description	Rabbit Polyclonal antibody to Tubulin beta 3
Species/Host	Rabbit
Reactivity	Human, Mouse, Rat
Conjugation	Unconjugated
Tested Applications	ELISA, IF, WB
Immunogen	Recombinant fusion protein containing a sequence corresponding to amino acids 40-260 of human β III-Tubulin/ β 3-Tubulin. (NP_006077.2).
Preservatives	PBS with 0.01% thimerosal, 50% glycerol, pH 7.3.
Storage	Maintain refrigerated at 2-8°C for up to 2 weeks. For long term storage store at -20°C in small aliquots to prevent freeze-thaw cycles.
Note	For research use only
Isotype	IgG
Clonality	Polyclonal
MW	55kDa
Uniprot ID	Q13509
Dilution Range	WB: 1:500-1:2000, IHC-P: 1:50-1:200, IF: 1:50-1:200, IP: 1:50-1:200
Expiration Date	12 months from date of receipt.



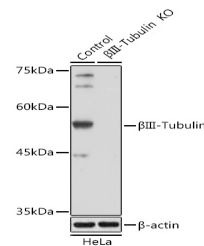
Immunofluorescence analysis of paraffin-

...



Immunofluorescence analysis of paraffin-

...



Western blot analysis of lysates from wi...