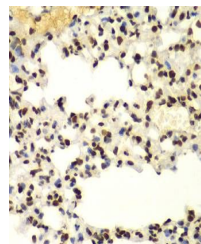


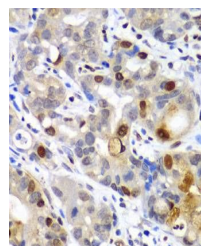
Product Datasheet

SUMO2 antibody (orb541873)

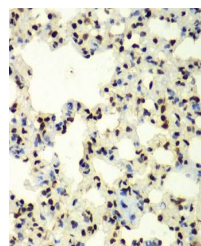
Description	Rabbit polyclonal antibody to SUMO2
Reactivity	Human, Mouse, Rat
Conjugation	Unconjugated
Tested Applications	IHC, WB
Immunogen	Recombinant fusion protein of human SUMO2/3(NP_008868.3).
Preservatives	PBS with 0.02% sodium azide,50% glycerol,pH7.3.
Storage	Store at -20°C. Avoid freeze / thaw cycles.
Note	For research use only
Isotype	IgG
Clonality	Polyclonal
MW	16kDa
Uniprot ID	P61956
Dilution Range	WB: 1:500-1:2000, IHC-P: 1:50-1:200
Expiration Date	12 months from date of receipt.



Immunohistochemical staining of mouse lu...



Immunohistochemical staining of human ga...



Immunohistochemical staining of rat lung...