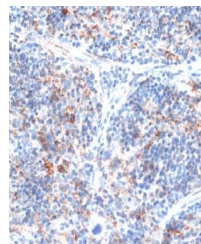


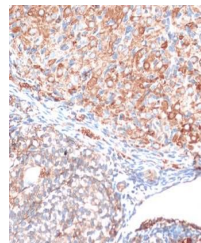
Product Datasheet

SLAMF7 antibody (orb541623)

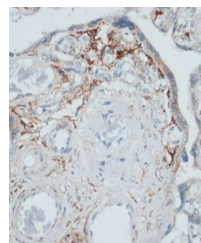
Description	Rabbit polyclonal antibody to SLAMF7
Reactivity	Human, Mouse, Rat
Conjugation	Unconjugated
Tested Applications	IHC, WB
Immunogen	Recombinant fusion protein of human SLAMF7(NP_067004.3).
Preservatives	PBS with 0.01% thiomersal,50% glycerol,pH7.3.
Storage	Store at -20°C. Avoid freeze / thaw cycles.
Note	For research use only
Isotype	IgG
Clonality	Polyclonal
MW	35-70KDa
Uniprot ID	Q9NQ25
Dilution Range	WB: 1:500-1:2000, IHC-P: 1:50-1:200
Expiration Date	12 months from date of receipt.



Immunohistochemical staining of rat sple...



Immunohistochemical staining of rat ovar...



Immunohistochemical staining of human pl...