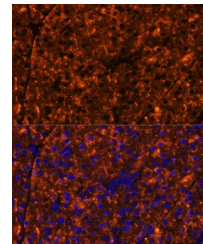


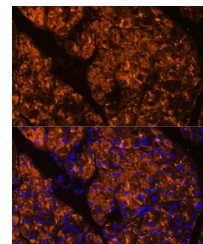
Product Datasheet

SERPINI2 antibody (orb541571)

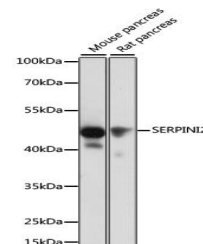
Description	Rabbit polyclonal antibody to SERPINI2
Reactivity	Mouse, Rat
Conjugation	Unconjugated
Tested Applications	ICC, IF, IHC, WB
Immunogen	Recombinant fusion protein of human SERPINI2(NP_006208.1).
Preservatives	PBS with 0.01% thiomersal,50% glycerol,pH7.3.
Storage	Store at -20°C. Avoid freeze / thaw cycles.
Note	For research use only
Isotype	IgG
Clonality	Polyclonal
MW	46kDa
Uniprot ID	075830
Dilution Range	WB: 1:500-1:2000
Expiration Date	12 months from date of receipt.



Immunofluorescence analysis of mouse pancreas



Immunofluorescence analysis of rat pancreas



Western blot analysis of extracts of various sources