

## Product Datasheet

### SERPINA3 antibody (orb541558)

**Description** Rabbit polyclonal antibody to SERPINA3

**Reactivity** Human

**Conjugation** Unconjugated

**Tested Applications** IHC, WB

**Immunogen** A synthetic peptide of human Alpha-1 Antichymotrypsin (SERPINA3)(NP\_001076.2).

**Preservatives** PBS with 0.01% thiomersal,50% glycerol,pH7.3.

**Storage** Maintain refrigerated at 2-8°C for up to 2 weeks. For long term storage store at -20°C in small aliquots to prevent freeze-thaw cycles.

**Note** For research use only

**Isotype** IgG

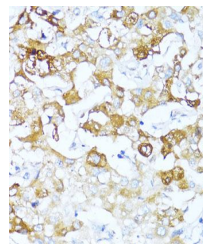
**Clonality** Polyclonal

**MW** 50-70KDa

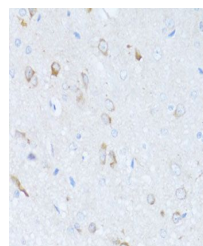
**Uniprot ID** **P01011**

**Dilution Range** WB: 1:200-1:1000, IHC-P: 1:50-1:200

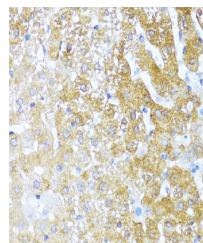
**Expiration Date** 12 months from date of receipt.



Immunohistochemical staining of human li...



Immunohistochemical staining of rat brai...



Immunohistochemical staining of rat live...