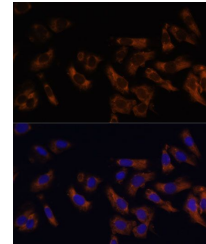


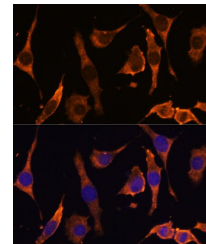
Product Datasheet

RPL36AL antibody (orb541423)

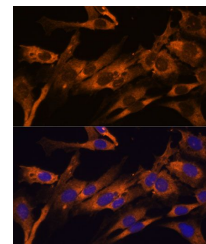
Description	Rabbit polyclonal antibody to RPL36AL
Reactivity	Human, Mouse, Rat
Conjugation	Unconjugated
Tested Applications	ICC, IF, WB
Immunogen	Recombinant fusion protein of human RPL36AL(NP_000992.1).
Preservatives	PBS with 0.01% thiomersal,50% glycerol,pH7.3.
Storage	Maintain refrigerated at 2-8°C for up to 2 weeks. For long term storage store at -20°C in small aliquots to prevent freeze-thaw cycles.
Note	For research use only
Isotype	IgG
Clonality	Polyclonal
MW	16kDa
Uniprot ID	Q969Q0
Dilution Range	WB: 1:500-1:2000
Expiration Date	12 months from date of receipt.



Immunofluorescence analysis of U-2 OS ce...



Immunofluorescence analysis of L929 cell...



Immunofluorescence analysis of C6 cells

...