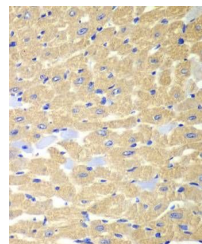


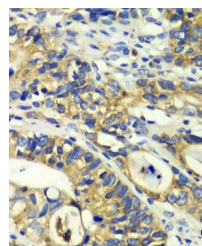
Product Datasheet

RPH3A antibody (orb541411)

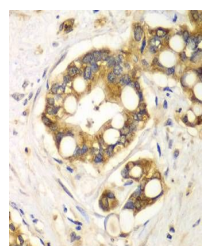
Description	Rabbit polyclonal antibody to RPH3A
Reactivity	Human, Mouse, Rat
Conjugation	Unconjugated
Tested Applications	IHC, WB
Immunogen	Recombinant fusion protein of human RPH3A(NP_055769.2).
Preservatives	PBS with 0.02% sodium azide,50% glycerol,pH7.3.
Storage	Maintain refrigerated at 2-8°C for up to 2 weeks. For long term storage store at -20°C in small aliquots to prevent freeze-thaw cycles.
Note	For research use only
Isotype	IgG
Clonality	Polyclonal
MW	77kDa
Uniprot ID	Q9Y2J0
Dilution Range	WB: 1:500-1:2000, IHC-P: 1:50-1:200
Expiration Date	12 months from date of receipt.



Immunohistochemical staining of mouse heart tissue.



Immunohistochemical staining of human colon tissue.



Immunohistochemical staining of human liver tissue.