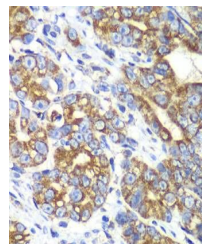


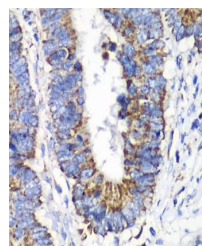
Product Datasheet

RALB antibody (orb541265)

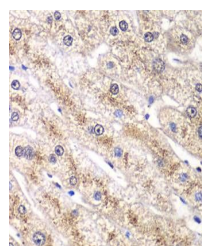
Description	Rabbit polyclonal antibody to RALB
Species/Host	Rabbit
Reactivity	Human, Mouse, Rat
Conjugation	Unconjugated
Tested Applications	IHC, WB
Immunogen	Recombinant fusion protein of human RALB (NP_002872.1).
Preservatives	Buffer: PBS with 0.02% sodium azide,50% glycerol,pH7.3.
Storage	Store at -20°C. Avoid freeze / thaw cycles.
Note	For research use only
Isotype	IgG
Clonality	Polyclonal
Purity	Affinity purification
MW	23kDa
Uniprot ID	P11234
Entrez	5899
Dilution Range	WB: 1:500-1:2000, IHC-P: 1:50-1:200
Expiration Date	12 months from date of receipt.



Immunohistochemical staining of human gallbladder tissue.



Immunohistochemical staining of human colon tissue.



Immunohistochemical staining of human liver tissue.