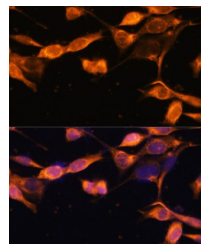


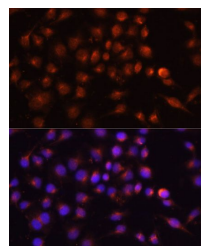
Product Datasheet

RAB11A antibody (orb541231)

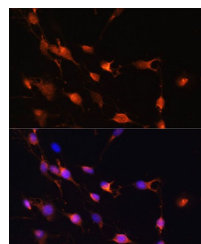
Description	Rabbit polyclonal antibody to RAB11A
Reactivity	Human, Mouse, Rat
Conjugation	Unconjugated
Tested Applications	ICC, IF, IHC, WB
Immunogen	A synthetic peptide of human RAB11A(NP_004654.1).
Preservatives	PBS with 0.01% thiomersal,50% glycerol,pH7.3.
Storage	Store at -20°C. Avoid freeze / thaw cycles.
Note	For research use only
Isotype	IgG
Clonality	Polyclonal
MW	24kDa
Uniprot ID	P62491
Dilution Range	WB: 1:500-1:2000
Expiration Date	12 months from date of receipt.



Immunofluorescence analysis of NIH-3T3 cells



Immunofluorescence analysis of HeLa cells



Immunofluorescence analysis of C6 cells