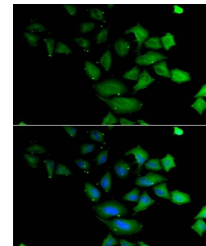


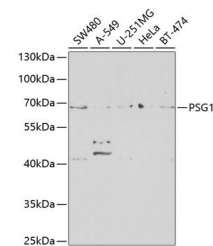
Product Datasheet

PSG1 antibody (orb541162)

Description	Rabbit polyclonal antibody to PSG1
Species/Host	Rabbit
Reactivity	Human
Conjugation	Unconjugated
Tested Applications	IF, WB
Immunogen	Recombinant fusion protein of human PSG1 (NP_001171754.1).
Preservatives	Buffer: PBS with 0.02% sodium azide, 50% glycerol, pH7.3.
Storage	Maintain refrigerated at 2-8°C for up to 2 weeks. For long term storage store at -20°C in small aliquots to prevent freeze-thaw cycles.
Note	For research use only
Isotype	IgG
Clonality	Polyclonal
Purity	Affinity purification
MW	65kDa
Uniprot ID	P11464
Entrez	5669
Dilution Range	WB: 1:500-1:2000, IF: 1:50-1:200
Expiration Date	12 months from date of receipt.



Immunofluorescence analysis of U2OS cell...



Western blot analysis of extracts of var...