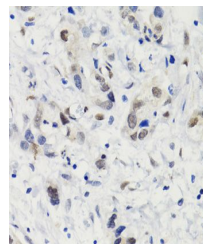


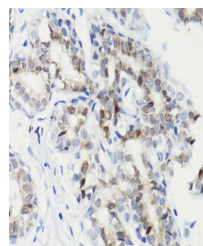
Product Datasheet

Stat3 (Phospho-S727) antibody (orb540972)

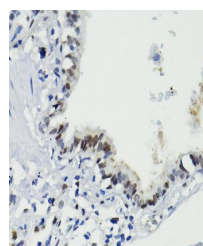
Description	Rabbit polyclonal antibody to Stat3 (Phospho-S727)
Reactivity	Human, Mouse, Rat
Conjugation	Unconjugated
Tested Applications	IHC, IP, WB
Immunogen	A synthetic phosphorylated peptide around S727 of human Phospho-STAT3-S727(NP_644805.1).
Preservatives	PBS with 0.01% thiomersal, 50% glycerol, pH 7.3.
Storage	Maintain refrigerated at 2-8°C for up to 2 weeks. For long term storage store at -20°C in small aliquots to prevent freeze-thaw cycles.
Note	For research use only
Isotype	IgG
Clonality	Polyclonal
MW	86KDa
Uniprot ID	P40763
Dilution Range	WB: 1:500-1:2000, IHC-P: 1:50-1:200, IP: 1:50-1:100
Expiration Date	12 months from date of receipt.



Immunohistochemical staining of human gastric tissue.



Immunohistochemical staining of human breast tissue.



Immunohistochemical staining of human lung tissue.