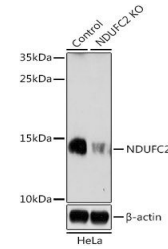


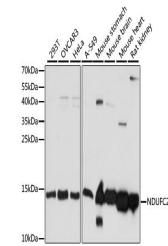
Product Datasheet

NDUFC2 antibody (orb540604)

Description	Rabbit polyclonal antibody to NDUFC2
Species/Host	Rabbit
Reactivity	Human, Mouse, Rat
Conjugation	Unconjugated
Tested Applications	IHC, WB
Immunogen	A synthetic peptide of human NDUFC2 (NP_004540.1).
Preservatives	Buffer: PBS with 0.02% sodium azide, 50% glycerol, pH 7.3.
Storage	Maintain refrigerated at 2-8°C for up to 2 weeks. For long term storage store at -20°C in small aliquots to prevent freeze-thaw cycles.
Note	For research use only
Isotype	IgG
Clonality	Polyclonal
Purity	Affinity purification
MW	14kDa
Uniprot ID	095298
Entrez	4718
Dilution Range	WB: 1:500-1:2000
Expiration Date	12 months from date of receipt.



Western blot analysis of extracts from n...



Western blot analysis of extracts of var...