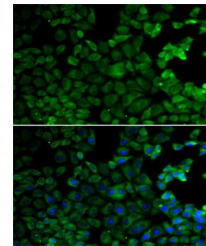


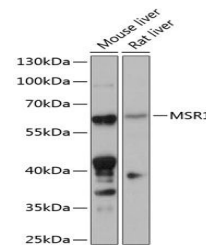
Product Datasheet

MSR1 antibody (orb540483)

Description	Rabbit polyclonal antibody to MSR1
Reactivity	Human, Mouse, Rat
Conjugation	Unconjugated
Tested Applications	WB
Immunogen	Recombinant fusion protein of human MSR1(NP_619729.1).
Preservatives	PBS with 0.02% sodium azide,50% glycerol,pH7.3.
Storage	Store at -20°C. Avoid freeze / thaw cycles.
Note	For research use only
Isotype	IgG
Clonality	Polyclonal
MW	60-90kDa
Uniprot ID	P21757
Dilution Range	WB: 1:500-1:2000, IF: 1:50-1:200
Expiration Date	12 months from date of receipt.



Immunofluorescence analysis of HeLa cell...



Western blot analysis of extracts of var...