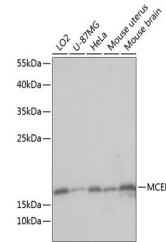


Product Datasheet

MCEE antibody (orb540363)

Description	Rabbit polyclonal antibody to MCEE
Reactivity	Human, Mouse
Conjugation	Unconjugated
Tested Applications	IHC, WB
Immunogen	Recombinant fusion protein of human MCEE(NP_115990.3).
Preservatives	PBS with 0.01% thiomersal, 50% glycerol, pH7.3.
Storage	Maintain refrigerated at 2-8°C for up to 2 weeks. For long term storage store at -20°C in small aliquots to prevent freeze-thaw cycles.
Note	For research use only
Isotype	IgG
Clonality	Polyclonal
MW	19kDa
Uniprot ID	Q96PE7
Dilution Range	WB: 1:500-1:2000
Expiration Date	12 months from date of receipt.



Western blot analysis of extracts of var...