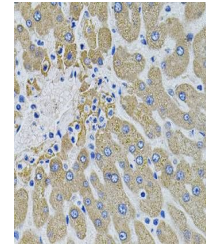


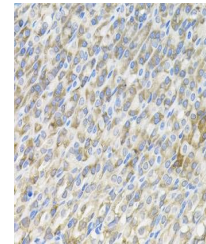
Product Datasheet

MBL2 antibody (orb540352)

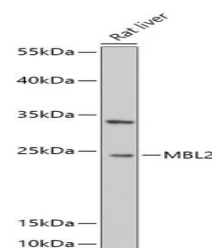
Description	Rabbit polyclonal antibody to MBL2
Reactivity	Human, Rat
Conjugation	Unconjugated
Tested Applications	IHC, WB
Immunogen	Recombinant fusion protein of human MBL2(NP_000233.1).
Preservatives	PBS with 0.02% sodium azide,50% glycerol,pH7.3.
Storage	Maintain refrigerated at 2-8°C for up to 2 weeks. For long term storage store at -20°C in small aliquots to prevent freeze-thaw cycles.
Note	For research use only
Isotype	IgG
Clonality	Polyclonal
MW	24kDa
Uniprot ID	P11226
Dilution Range	WB: 1:500-1:2000, IHC-P: 1:50-1:200
Expiration Date	12 months from date of receipt.



Immunohistochemical staining of human li...



Immunohistochemical staining of mouse st...



Western blot analysis of extracts of Rat...