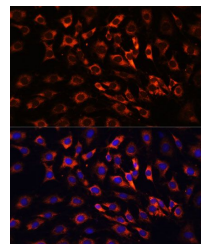


Product Datasheet

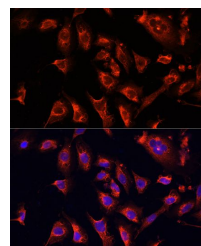
MAPK1/MAPK3 antibody (orb540324)

Description	Rabbit polyclonal antibody to MAPK1/MAPK3
Reactivity	Human, Mouse, Rat
Conjugation	Unconjugated
Tested Applications	ICC, IF, IHC, WB
Immunogen	A synthetic peptide of human ERK1 / ERK2(NP_620407.1/NP_002737.2).
Preservatives	PBS with 0.05% proclin300,50% glycerol,pH7.3.
Storage	Maintain refrigerated at 2-8°C for up to 2 weeks. For long term storage store at -20°C in small aliquots to prevent freeze-thaw cycles.
Note	For research use only
Isotype	IgG
Clonality	Polyclonal
MW	42KDa/44KDa
Uniprot ID	P27361, P28482
Dilution Range	WB: 1:1000-1:2000, IHC-P: 1:50-1:200, IF: 1:50-1:200
Expiration Date	12 months from date of receipt.

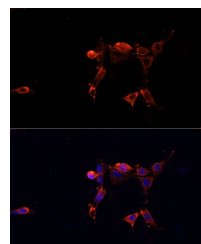


Immunofluorescence analysis of C6 cells

...



Immunofluorescence analysis of U2OS cell...



Immunofluorescence analysis of NIH/3T3 C...