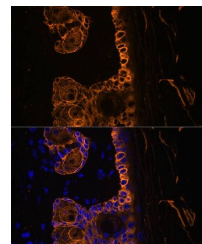


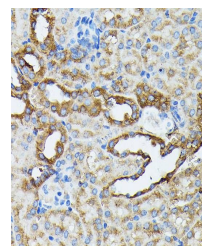
Product Datasheet

KRT14 antibody (orb540173)

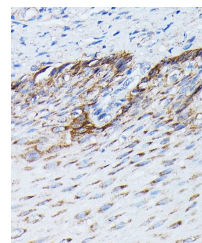
Description	Rabbit polyclonal antibody to KRT14
Reactivity	Human, Mouse, Rat
Conjugation	Unconjugated
Tested Applications	ICC, IF, IHC, WB
Immunogen	A synthetic peptide of human (Cytokeratin 14 (KRT14))(NP_000517.2).
Preservatives	PBS with 0.01% thiomersal,50% glycerol,pH7.3.
Storage	Maintain refrigerated at 2-8°C for up to 2 weeks. For long term storage store at -20°C in small aliquots to prevent freeze-thaw cycles.
Note	For research use only
Isotype	IgG
Clonality	Polyclonal
MW	52KDa
Uniprot ID	P02533
Dilution Range	WB: 1:500-1:2000
Expiration Date	12 months from date of receipt.



Immunofluorescence analysis of Rat skin ...



Immunohistochemical staining of Mouse ki...



Immunohistochemical staining of Human es...