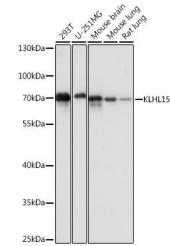


Product Datasheet

KLHL15 antibody (orb540146)

Description	Rabbit polyclonal antibody to KLHL15
Reactivity	Human, Mouse, Rat
Conjugation	Unconjugated
Tested Applications	WB
Immunogen	Recombinant fusion protein of human KLHL15(NP_085127.2).
Preservatives	PBS with 0.01% thiomersal,50% glycerol,pH7.3.
Storage	Maintain refrigerated at 2-8°C for up to 2 weeks. For long term storage store at -20°C in small aliquots to prevent freeze-thaw cycles.
Note	For research use only
Isotype	IgG
Clonality	Polyclonal
MW	70kDa
Uniprot ID	Q96M94
Dilution Range	WB: 1:500-1:2000
Expiration Date	12 months from date of receipt.



Western blot analysis of extracts of var...