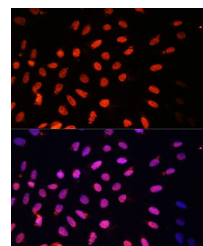


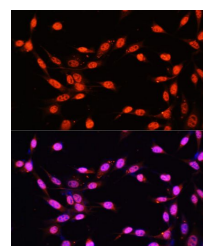
## Product Datasheet

### KLF2 antibody (orb540140)

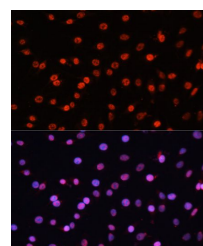
<b>Description</b>	Rabbit polyclonal antibody to KLF2
<b>Reactivity</b>	Human
<b>Conjugation</b>	Unconjugated
<b>Tested Applications</b>	WB
<b>Immunogen</b>	A synthetic peptide of human KLF2(NP_057354.1).
<b>Preservatives</b>	PBS with 0.05% proclin300,50% glycerol,pH7.3.
<b>Storage</b>	Maintain refrigerated at 2-8°C for up to 2 weeks. For long term storage store at -20°C in small aliquots to prevent freeze-thaw cycles.
<b>Note</b>	For research use only
<b>Isotype</b>	IgG
<b>Clonality</b>	Polyclonal
<b>MW</b>	37KDa
<b>Uniprot ID</b>	<b>Q9Y5W3</b>
<b>Dilution Range</b>	WB: 1:500-1:2000, IF: 1:50-1:200
<b>Expiration Date</b>	12 months from date of receipt.



Immunofluorescence analysis of U2OS cell...



Immunofluorescence analysis of NIH/3T3 C...



Immunofluorescence analysis of C6 cells ...