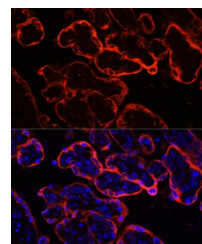


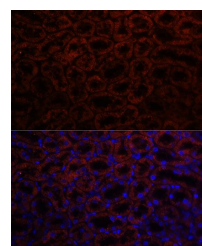
Product Datasheet

Klotho antibody (orb540134)

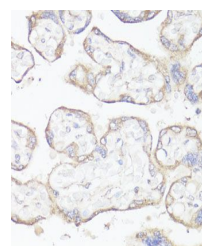
Description	Rabbit Polyclonal antibody to Klotho
Reactivity	Human, Mouse, Rat
Conjugation	Unconjugated
Tested Applications	WB
Immunogen	Recombinant fusion protein of human KL(NP_004786.2).
Preservatives	PBS with 0.01% thiomersal,50% glycerol,pH7.3.
Storage	Maintain refrigerated at 2-8°C for up to 2 weeks. For long term storage store at -20°C in small aliquots to prevent freeze-thaw cycles.
Note	For research use only
Isotype	IgG
Clonality	Polyclonal
MW	65kDa, 120kDa
Uniprot ID	Q9UEF7
Dilution Range	WB: 1:500-1:2000, IHC-P: 1:50-1:200, IF: 1:50-1:200
Expiration Date	12 months from date of receipt.



Immunofluorescence analysis of human placenta



Immunofluorescence analysis of rat kidney



Immunohistochemical staining of human placenta