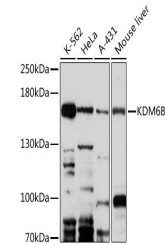


Product Datasheet

Kdm6b antibody (orb540107)

Description	Rabbit polyclonal antibody to Kdm6b
Species/Host	Rabbit
Reactivity	Human, Mouse, Rat
Conjugation	Unconjugated
Tested Applications	IF, IHC, WB
Immunogen	Recombinant protein of human Kdm6b.
Preservatives	Buffer: PBS with 0.02% sodium azide,50% glycerol,pH7.3.
Storage	Maintain refrigerated at 2-8°C for up to 2 weeks. For long term storage store at -20°C in small aliquots to prevent freeze-thaw cycles.
Note	For research use only
Isotype	IgG
Clonality	Polyclonal
Purity	Affinity purification
MW	177kDa
Entrez	23135
Dilution Range	WB: 1:500-1:2000, IF: 1:50-1:200
Expiration Date	12 months from date of receipt.



Western blot analysis of extracts of var...