

## Product Datasheet

### HHLA2 antibody (orb539812)

**Description** Rabbit polyclonal antibody to HHLA2

**Reactivity** Human

**Conjugation** Unconjugated

**Tested Applications** IHC, WB

**Immunogen** Recombinant fusion protein of human HHLA2(NP\_009003.1).

**Preservatives** PBS with 0.01% thiomersal,50% glycerol,pH7.3.

**Storage** Maintain refrigerated at 2-8°C for up to 2 weeks. For long term storage store at -20°C in small aliquots to prevent freeze-thaw cycles.

**Note** For research use only

**Isotype** IgG

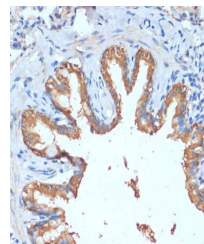
**Clonality** Polyclonal

**MW** 39kDa/46kDa

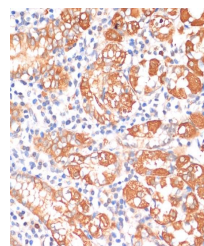
**Uniprot ID** [Q9UM44](#)

**Dilution Range** WB: 1:500-1:2000, IHC-P: 1:50-1:200

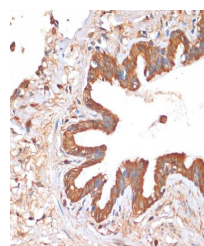
**Expiration Date** 12 months from date of receipt.



Immunohistochemical staining of rat lung...



Immunohistochemical staining of human st...



Immunohistochemical staining of human lu...