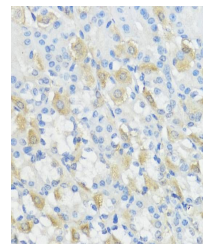


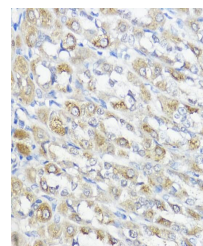
Product Datasheet

GPX2 antibody (orb539711)

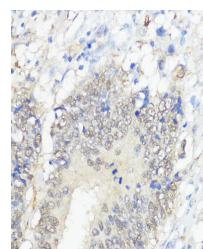
Description	Rabbit polyclonal antibody to GPX2
Reactivity	Human, Mouse, Rat
Conjugation	Unconjugated
Tested Applications	IHC, WB
Immunogen	Recombinant fusion protein of human GPX2(NP_002074.2).
Preservatives	PBS with 0.01% thiomersal,50% glycerol,pH7.3.
Storage	Maintain refrigerated at 2-8°C for up to 2 weeks. For long term storage store at -20°C in small aliquots to prevent freeze-thaw cycles.
Note	For research use only
Isotype	IgG
Clonality	Polyclonal
MW	21kDa
Uniprot ID	P18283
Dilution Range	WB: 1:500-1:2000
Expiration Date	12 months from date of receipt.



Immunohistochemical staining of mouse stomach tissue.



Immunohistochemical staining of rat stomach tissue.



Immunohistochemical staining of human colon tissue.