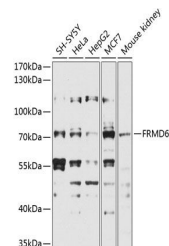


Product Datasheet

FRMD6 antibody (orb539533)

| | |
|----------------------------|---|
| Description | Rabbit polyclonal antibody to FRMD6 |
| Reactivity | Human, Mouse, Rat |
| Conjugation | Unconjugated |
| Tested Applications | ICC, IF, IHC, WB |
| Immunogen | A synthetic peptide of human FRMD6(NP_001253975.1). |
| Preservatives | PBS with 0.01% thiomersal, 50% glycerol, pH 7.3. |
| Storage | Maintain refrigerated at 2-8°C for up to 2 weeks. For long term storage store at -20°C in small aliquots to prevent freeze-thaw cycles. |
| Note | For research use only |
| Isotype | IgG |
| Clonality | Polyclonal |
| MW | 72kDa |
| Uniprot ID | Q96NE9 |
| Dilution Range | WB: 1:1000-1:4000 |
| Expiration Date | 12 months from date of receipt. |



Western blot analysis of extracts of var...