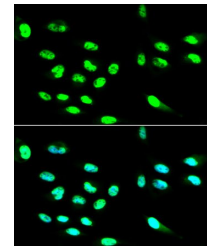


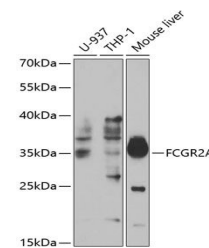
Product Datasheet

FCGR2A antibody (orb539463)

Description	Rabbit polyclonal antibody to FCGR2A
Reactivity	Human, Mouse, Rat
Conjugation	Unconjugated
Tested Applications	ICC, IF, WB
Immunogen	A synthetic peptide of human FCGR2A(NP_001129691.1).
Preservatives	PBS with 0.05% proclin300,50% glycerol,pH7.3.
Storage	Maintain refrigerated at 2-8°C for up to 2 weeks. For long term storage store at -20°C in small aliquots to prevent freeze-thaw cycles.
Note	For research use only
Isotype	IgG
Clonality	Polyclonal
MW	40-50KDa
Uniprot ID	P12318
Dilution Range	WB: 1:500-1:2000, IF: 1:50-1:200
Expiration Date	12 months from date of receipt.



Immunofluorescence analysis of HepG2 cel...



Western blot analysis of extracts of var...