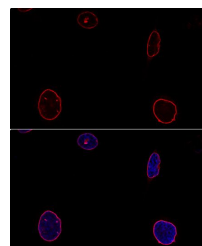


Product Datasheet

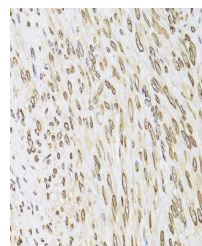
Emerin antibody (orb539345)

Description	Rabbit Polyclonal antibody to Emerin
Reactivity	Human, Mouse
Conjugation	Unconjugated
Tested Applications	ICC, IF, IHC, WB
Immunogen	Recombinant fusion protein of human Emerin/Emerin/EMD(NP_000108.1).
Preservatives	PBS with 0.02% sodium azide,50% glycerol,pH7.3.
Storage	Maintain refrigerated at 2-8°C for up to 2 weeks. For long term storage store at -20°C in small aliquots to prevent freeze-thaw cycles.
Note	For research use only
Isotype	IgG
Clonality	Polyclonal
MW	35kDa
Uniprot ID	P50402
Dilution Range	WB: 1:500-1:2000, IHC-P: 1:50-1:200, IF: 1:50-1:200
Expiration Date	12 months from date of receipt.

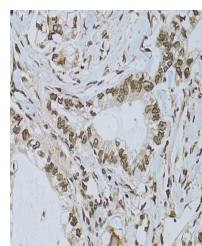


Immunofluorescence analysis of Confocal

...



Immunohistochemical staining of human ut...



Immunohistochemical staining of human ga...