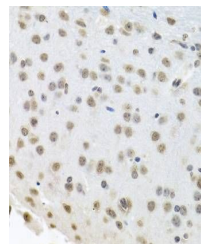


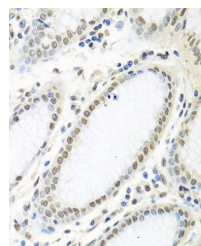
Product Datasheet

ELAVL1 antibody (orb539329)

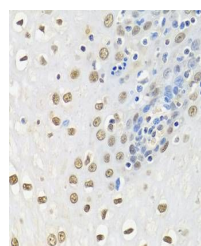
Description	Rabbit polyclonal antibody to ELAVL1
Reactivity	Human, Mouse
Conjugation	Unconjugated
Tested Applications	ICC, IF, IHC, WB
Immunogen	A synthetic peptide of human HuR/ELAVL1(NP_001410.2).
Preservatives	PBS with 0.02% sodium azide,50% glycerol,pH7.3.
Storage	Maintain refrigerated at 2-8°C for up to 2 weeks. For long term storage store at -20°C in small aliquots to prevent freeze-thaw cycles.
Note	For research use only
Isotype	IgG
Clonality	Polyclonal
MW	36kDa
Uniprot ID	Q15717
Dilution Range	WB: 1:500-1:1000, IHC-P: 1:50-1:200, IF: 1:50-1:200
Expiration Date	12 months from date of receipt.



Immunohistochemical staining of mouse brain tissue.



Immunohistochemical staining of human tissue.



Immunohistochemical staining of human esophageal tissue.