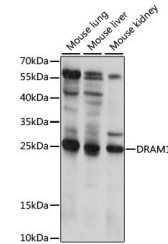


Product Datasheet

DRAM1 antibody (orb539248)

Description	Rabbit polyclonal antibody to DRAM1
Reactivity	Mouse
Conjugation	Unconjugated
Tested Applications	WB
Immunogen	A synthetic peptide of human DRAM1(NP_060840.2).
Preservatives	PBS with 0.01% thiomersal,50% glycerol,pH7.3.
Storage	Maintain refrigerated at 2-8°C for up to 2 weeks. For long term storage store at -20°C in small aliquots to prevent freeze-thaw cycles.
Note	For research use only
Isotype	IgG
Clonality	Polyclonal
MW	26kDa
Uniprot ID	Q8N682
Dilution Range	WB: 1:200-1:2000
Expiration Date	12 months from date of receipt.



Western blot analysis of extracts of var...