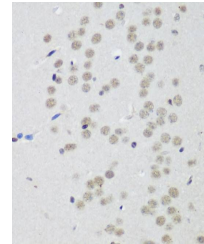


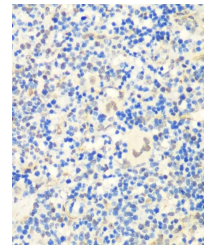
Product Datasheet

CTCF antibody (orb539053)

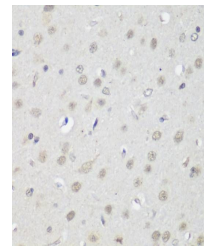
Description	Rabbit polyclonal antibody to CTCF
Reactivity	Human, Mouse, Rat
Conjugation	Unconjugated
Tested Applications	ChIP, ICC, IF, IHC, IP, WB
Immunogen	Recombinant fusion protein of human CTCF(NP_006556.1).
Preservatives	PBS with 0.01% thiomersal,50% glycerol,pH7.3.
Storage	Maintain refrigerated at 2-8°C for up to 2 weeks. For long term storage store at -20°C in small aliquots to prevent freeze-thaw cycles.
Note	For research use only
Isotype	IgG
Clonality	Polyclonal
MW	140kDa
Uniprot ID	P49711
Dilution Range	WB: 1:1000-1:2000, IHC-P: 1:50-1:200, IF: 1:50-1:200, IP: 1:50-1:100, ChIP: 1:50-1:200
Expiration Date	12 months from date of receipt.



Immunohistochemical staining of mouse brain...



Immunohistochemical staining of rat spleen...



Immunohistochemical staining of rat brain...