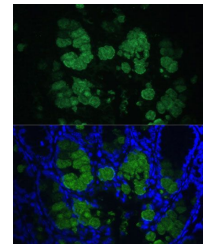


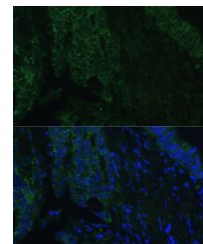
## Product Datasheet

### CLCA1 antibody (orb538916)

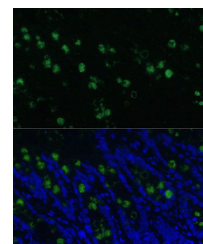
<b>Description</b>	Rabbit polyclonal antibody to CLCA1
<b>Species/Host</b>	Rabbit
<b>Reactivity</b>	Mouse, Rat
<b>Conjugation</b>	Unconjugated
<b>Tested Applications</b>	IF, IHC, WB
<b>Immunogen</b>	Recombinant fusion protein of human CLCA1 (NP_001276.2).
<b>Preservatives</b>	Buffer: PBS with 0.02% sodium azide, 50% glycerol, pH7.3.
<b>Storage</b>	Maintain refrigerated at 2-8°C for up to 2 weeks. For long term storage store at -20°C in small aliquots to prevent freeze-thaw cycles.
<b>Note</b>	For research use only
<b>Isotype</b>	IgG
<b>Clonality</b>	Polyclonal
<b>Purity</b>	Affinity purification
<b>MW</b>	85kDa
<b>Uniprot ID</b>	<a href="#">A8K7I4</a>
<b>Entrez</b>	<a href="#">1179</a>
<b>Dilution Range</b>	WB: 1:500-1:2000
<b>Expiration Date</b>	12 months from date of receipt.



Immunofluorescence analysis of mouse colon...



Immunofluorescence analysis of human colon...



Immunofluorescence analysis of rat colon...