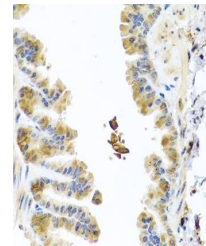


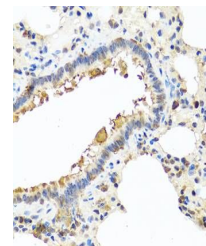
Product Datasheet

CHI3L2 antibody (orb538876)

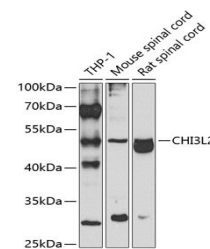
Description	Rabbit polyclonal antibody to CHI3L2
Species/Host	Rabbit
Reactivity	Human, Mouse, Rat
Conjugation	Unconjugated
Tested Applications	WB
Immunogen	Recombinant fusion protein of human CHI3L2 (NP_003991.2).
Preservatives	Buffer: PBS with 0.02% sodium azide,50% glycerol,pH7.3.
Storage	Maintain refrigerated at 2-8°C for up to 2 weeks. For long term storage store at -20°C in small aliquots to prevent freeze-thaw cycles.
Note	For research use only
Isotype	IgG
Clonality	Polyclonal
Purity	Affinity purification
MW	44kDa
Uniprot ID	Q15782
Entrez	1117
Dilution Range	WB: 1:500-1:2000, IHC-P: 1:50-1:100
Expiration Date	12 months from date of receipt.



Immunohistochemical staining of mouse lu...



Immunohistochemical staining of rat lung...



Western blot analysis of extracts of var...