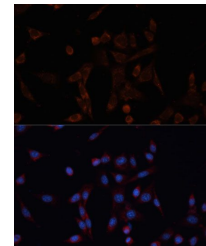


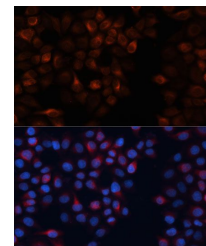
Product Datasheet

CANX antibody (orb538702)

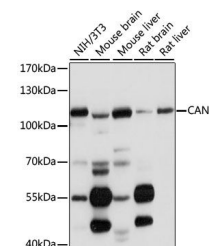
Description	Rabbit polyclonal antibody to CANX
Reactivity	Human, Mouse, Rat
Conjugation	Unconjugated
Tested Applications	ICC, IF, IP, WB
Immunogen	A synthetic peptide of human Calnexin(NP_001737.1).
Preservatives	PBS with 0.05% proclin300,50% glycerol,pH7.3.
Storage	Maintain refrigerated at 2-8°C for up to 2 weeks. For long term storage store at -20°C in small aliquots to prevent freeze-thaw cycles.
Note	For research use only
Isotype	IgG
Clonality	Polyclonal
MW	90KDa
Uniprot ID	P27824
Dilution Range	WB: 1:500-1:2000, IHC-P: 1:50-1:100, IF: 1:50-1:100
Expiration Date	12 months from date of receipt.



Immunofluorescence analysis of NIH/3T3 C...



Immunofluorescence analysis of HeLa cell...



Western blot analysis of extracts of var...