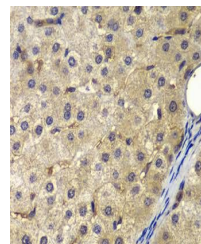


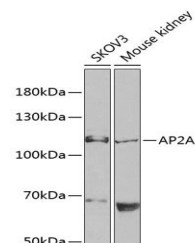
Product Datasheet

AP2A2 antibody (orb538440)

Description	Rabbit polyclonal antibody to AP2A2
Reactivity	Human, Mouse
Conjugation	Unconjugated
Tested Applications	WB
Immunogen	Recombinant fusion protein of human Alpha2-adaptin/AP2A2(NP_036437.1).
Preservatives	PBS with 0.02% sodium azide,50% glycerol,pH7.3.
Storage	Maintain refrigerated at 2-8°C for up to 2 weeks. For long term storage store at -20°C in small aliquots to prevent freeze-thaw cycles.
Note	For research use only
Isotype	IgG
Clonality	Polyclonal
MW	104kDa
Uniprot ID	O94973
Dilution Range	WB: 1:500-1:2000, IHC-P: 1:50-1:200
Expiration Date	12 months from date of receipt.



Immunohistochemical staining of human li...



Western blot analysis of extracts of var...