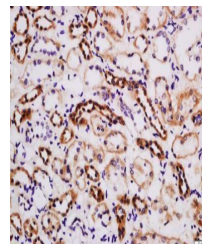


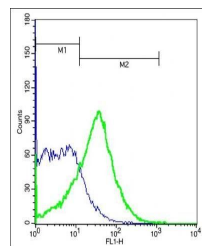
Product Datasheet

TIM1 antibody (orb5384)

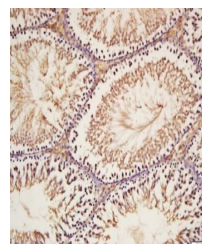
Description	TIM1 antibody
Species/Host	Rabbit
Reactivity	Human, Mouse
Conjugation	Unconjugated
Tested Applications	FC
Immunogen	KLH conjugated synthetic peptide derived from human HAVCR1 (51-150/359 aa)
Target	HAVCR1
Preservatives	0.01M TBS(pH7.4) with 1% rAlbumin, 0.03% Proclin300 and 50% Glycerol.
Form/Appearance	Liquid
Concentration	1mg/ml
Storage	Shipped at 4°C. Store at -20 °C for one year. Avoid repeated freeze/thaw cycles.
Note	For research use only
Isotype	IgG
Clonality	Polyclonal
MW	39 kDa
Uniprot ID	Q96D42
Dilution Range	Flow-Cyt=1ug/test
Expiration Date	12 months from date of receipt.



Immunohistochemical staining of human ki...



Flow cytometric analysis of (mo) Nephroc...



Immunohistochemical staining of rat test...