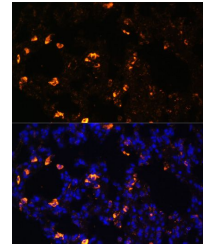


Product Datasheet

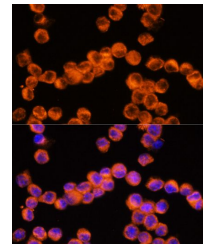
Cryopyrin antibody (orb538259)

Description	Rabbit Polyclonal antibody to Cryopyrin
Species/Host	Rabbit
Reactivity	Human
Conjugation	Unconjugated
Tested Applications	IF, IHC, WB
Immunogen	A synthetic peptide of human NLRP3 (NP_001120934.1).
Preservatives	Buffer: PBS with 0.02% sodium azide,50% glycerol,pH7.3.
Storage	Store at -20°C. Avoid freeze / thaw cycles.
Note	For research use only
Isotype	IgG
Clonality	Polyclonal
Purity	Affinity purification
MW	105KDa
Uniprot ID	Q96P20
Entrez	114548
Dilution Range	WB: 1:1000-1:3000
Expiration Date	12 months from date of receipt.

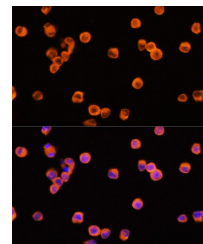


Immunofluorescence analysis of rat lung

...



Immunofluorescence analysis of Raw264.7 ...



Immunofluorescence analysis of Raw264.7 ...